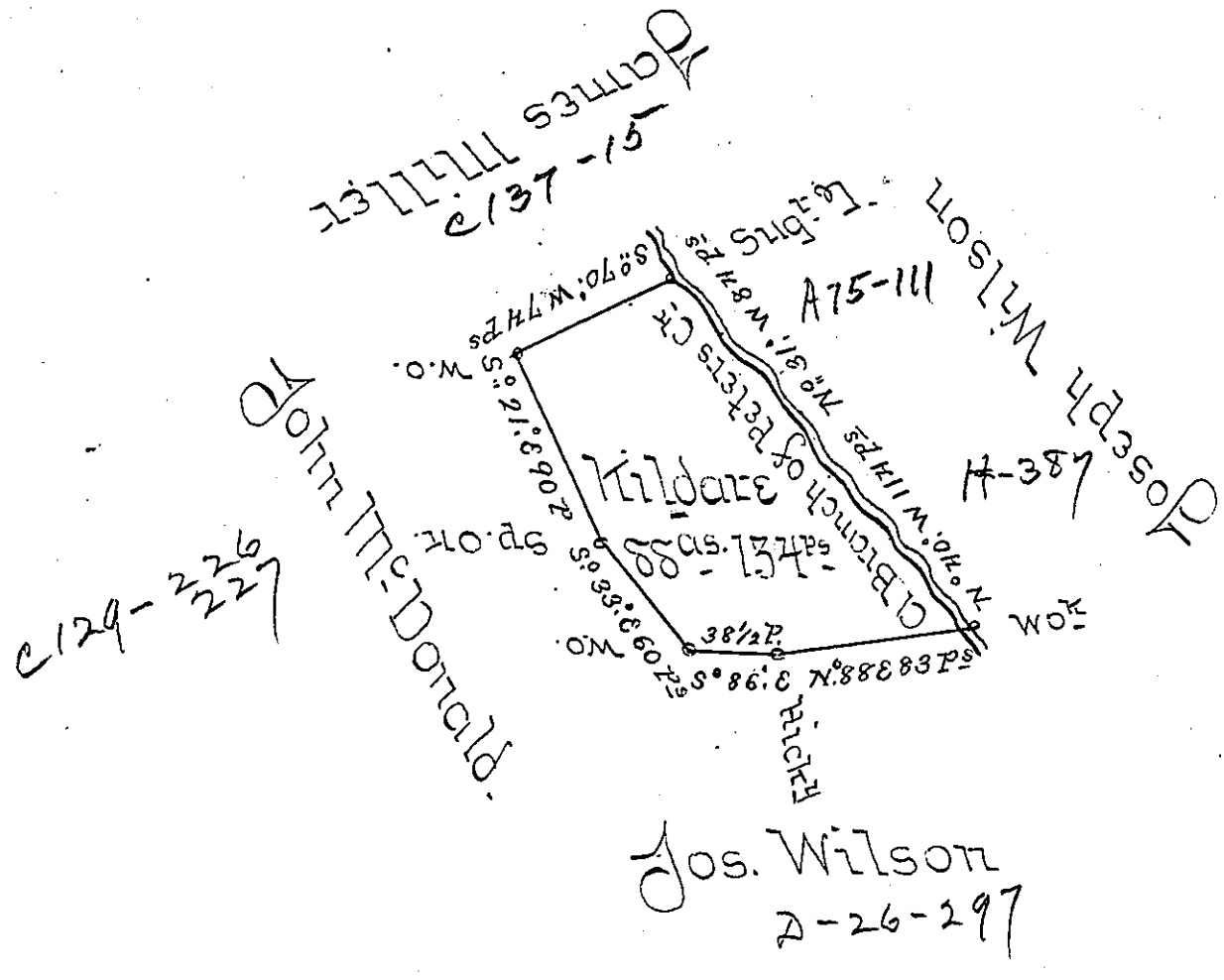


P31-368  
1946



Jos. Wilson  
2-26-297

A Draught of a Survey called "Killdare" situate on the Waters of Peters Creek in Washington County, containing 550± 134± and the usual Allow<sup>ce</sup> for Roads &c. executed July 12<sup>th</sup> 1755 in Pursuance of a Warrant granted to James Killdare for 1000± dated Apr<sup>l</sup> 1<sup>st</sup> 1755.

Bresley Nevill } D.S.  
Matt<sup>w</sup> Ritchie }

Jno Lukens Esq<sup>r</sup> S<sup>r</sup>gent  
(now)  
Allegheny County.

IN TESTIMONY that the above is a copy of the original remaining on file in the Department of Internal Affairs of Pennsylvania, made conformably to an Act of Assembly approved the 16th day of February, 1833, I have hereunto set my Hand and caused the Seal of said Department to be affixed at Harrisburg, this twenty fifth day of July 1905.

*Grace S. Brown*  
Secretary of Internal Affairs.